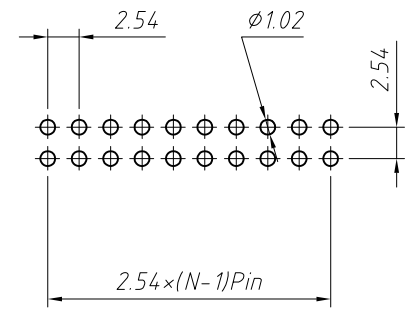
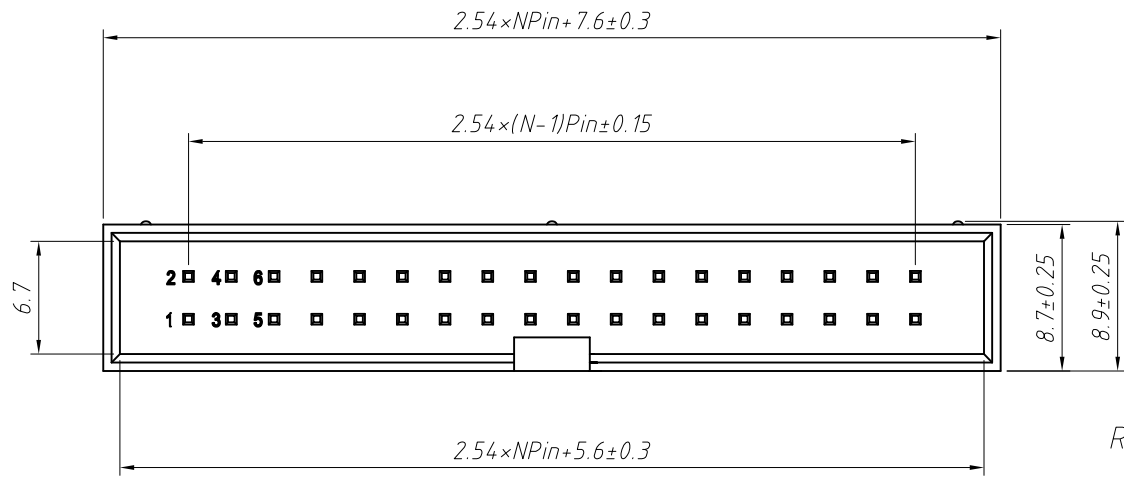


1 RoHS Compliance

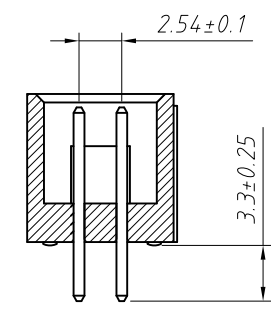
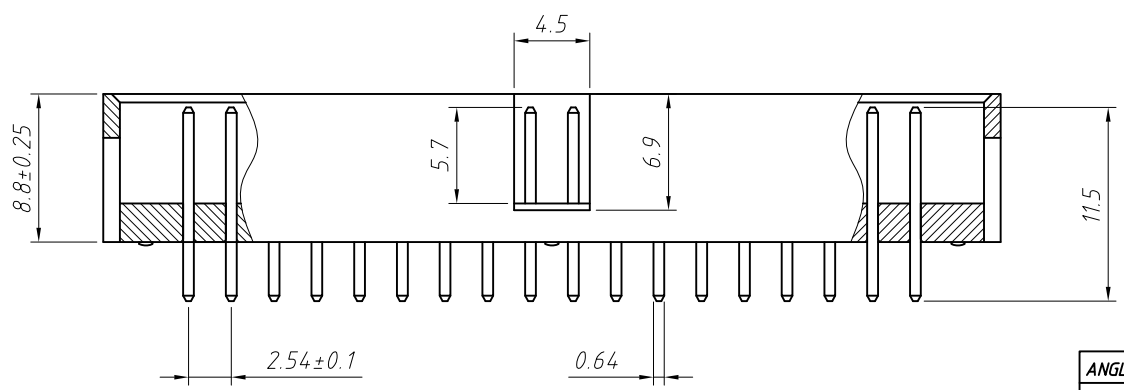


**Material:**  
 Housing:PBT,UL 94 V-0  
 Contact:Brass  
 Plating:Gold flash plated

**Electrical Characteristics:**  
 Rated Current: 3.0AMP  
 Contact Resistance: 20mΩ Max  
 Withstand Voltage: 1000V AC/DC  
 Insulator Resistance: 1000MΩ Min

**Mechanical**  
 Operating Temperature: -40°C ~ +105°C  
 Max.Processing Temp: 180°C for 30-60 seconds (200°C for 10 seconds)

Recommended P.C.B Layout (Top Side)  
 (PCB BOARD TOLERANCE ±0.05)



**Order Information:**  
 L-KLS1-202-XX-S-B-□  
 L: RoHS  
 Box Header Series  
 202: 2.54mm Pitch  
 XX-No. of 06 ~ 64 pin  
 Type: S-Straight pin  
 R-Right Angle Pin T-SMT  
 Color: B-Black G-Gray  
 Material: NONE=PBT B=PA6T

ANGLE TOLERANCE	PROJECTION	Description:	2.54mm Pitch
±3°			Box Header Connector
GENERAL TOLERANCE	UNITS	mm	KLS P/N:
x.x ±0.30	SHEET SIZE	A4	L-KLS1-202-XX-S-B-□
x.xx ±0.20	Draw:	Daniel	2018-07-10
x.xxx ±0.10	Check:	Daniel	2018-07-10



NingBo KLS ELECTRONIC CO.,LTD.