

SRF836NJC31-TB12R

□ SYSTEM □ □ □ □ □ □ □ □ □ □ CDMA Tx FILTER
 □ CARRIER FREQUENCY □ □ □ □ □ □ □ □ 824~849MHz

ELECTRICAL CHARACTERISTICS

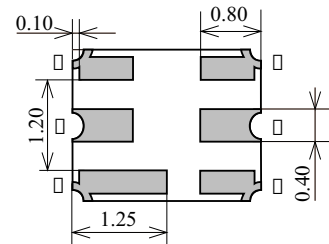
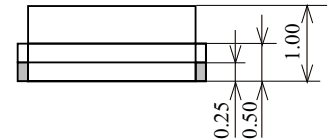
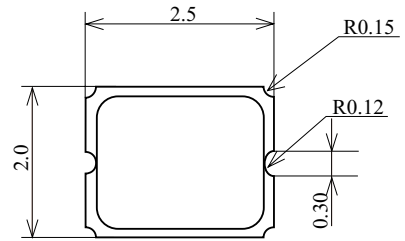
Ta = -40 ~ +85 °C

Items	Conditions [MHz]	Min.	Typ.*	Max.	Unit
Maximum insertion loss in pass band	829~849	-	3.0	3.5	dB
Pass band flatness	829~849	- □	1.0	1.5	dB
Out of band rejection (Absolute value)	DC ~ 800	35	40	-	dB
	869~894	28	32	-	dB
	978~1006	40	45	-	dB
	1050~2600	20	30	-	dB
Pass band VSWR	824~849	-	1.7	2.3	-
Nominal impedance		-	50	-	□

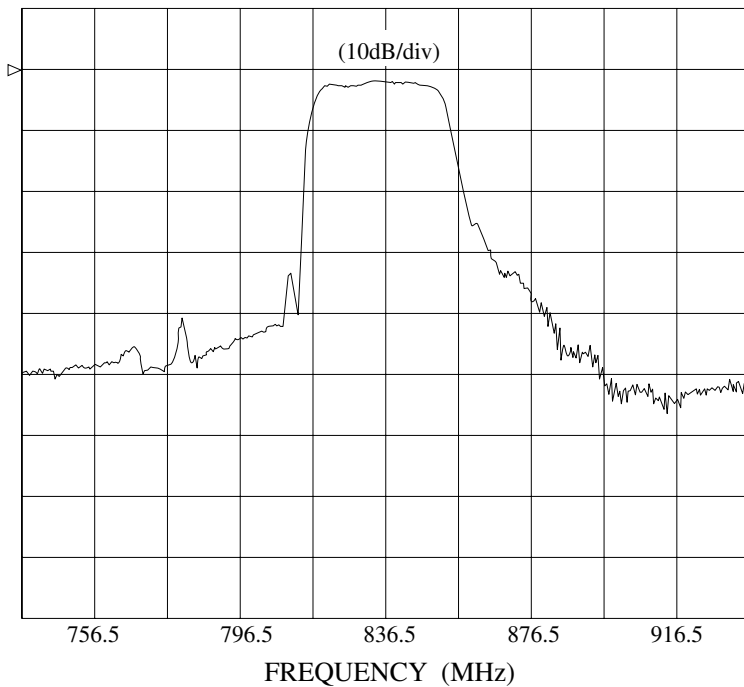
* Typical values are specified at 25 °C.

PACKAGE DIMENSION

Unit: mm



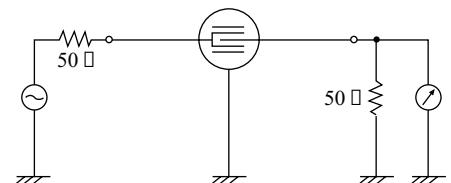
FREQUENCY CHARACTERISTICS



PIN CONNECTIONS

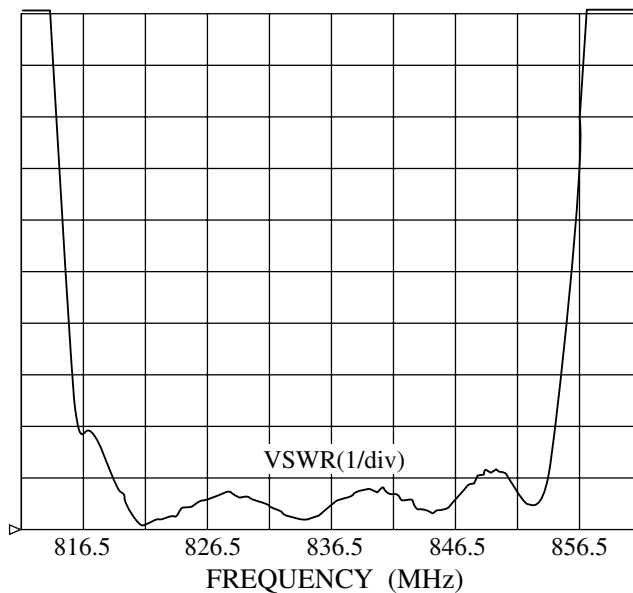
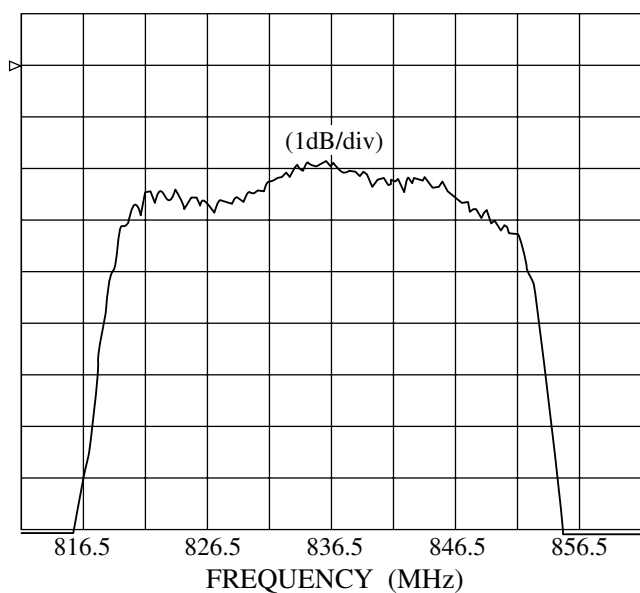
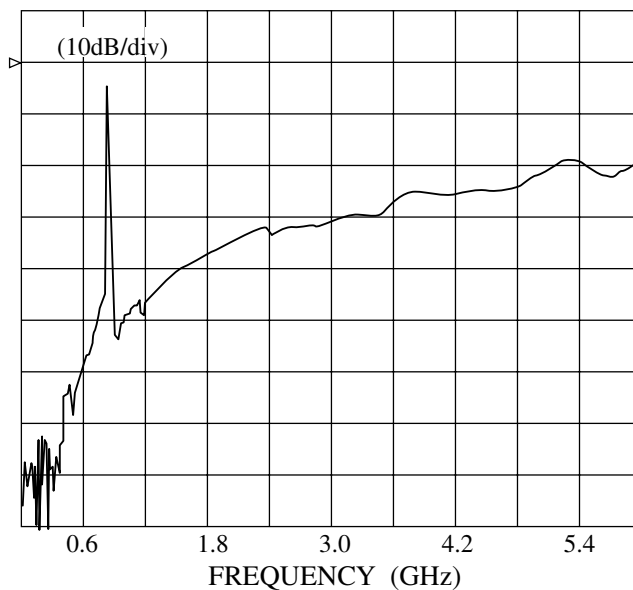
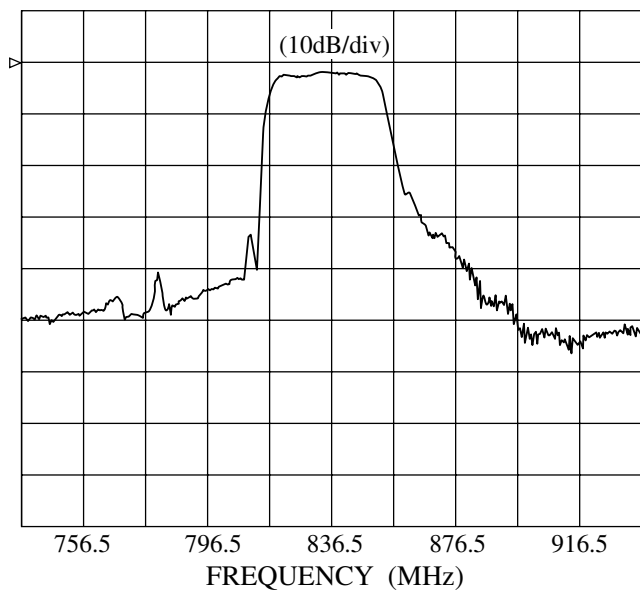
- Pin No □
- 1 □ GROUND
- 2 □ INPUT □ OUTPUT
- 3 □ GROUND
- 4 □ GROUND
- 5 □ OUTPUT □ INPUT
- 6 □ GROUND

MEASUREMENT CIRCUIT



□ The information contained herein is presented only as a guide for the applications of our products. No responsibility is assumed by TOSHIBA for any infringements of patents or other rights of the third parties which may result from its use. No license is granted by implication or otherwise under any patent or patent rights of TOSHIBA or others.
 □ The information contained herein may be changed without prior notice. It is therefore advisable to contact TOSHIBA before proceeding with the design of equipment incorporating this product.

FREQUENCY CHARACTERISTICS



ABSOLUTE MAXIMUM RATINGS (Ta = 25°C)

□Ta □ 25□ unless otherwise noted□

Items	Electrodes	Ratings	Notes
DC voltage	Between any□ two electrodes	0V	
Input power	Between input□ and ground	15 dBm	
Operating temp□		□40~ □85□ □	
Storage temp□		□40~ □85□ □	