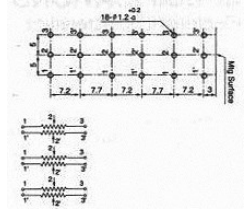
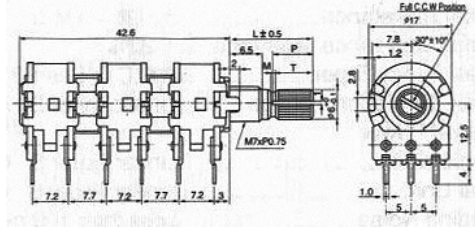
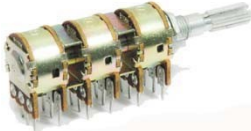


METAL SHAFT ROTARY POTENTIOMETER

Q-4617

F-16KJ6

Vertical Type, Dual Unit,
P.C.B. Terminal



SPECIFICATIONS

Electrical Characteristics

- Total Resistance 500Ω ~ 1MΩ
- Total Resistance Tolerance..... ± 20%
- Resistance Taper..... A, B, C, D, See P81
- Max. Operation Voltage..... Linear Taper B : AC 200 V .Other Tapers : AC 150V
- Rated Power
 Single Unit Linear Taper B : 0.2 W, Other Tapers : 0.1 W
 Dual Unit..... Linear Taper B : 0.125 W, Other Tapers : 0.06 W
- Sliding Noise..... Less than 100 mV
- Insulation Resistance..... More than 100 MΩ at DC 500 V
- Withstand Voltage..... 1 minute at AC 500 V
 Single Unit with Illuminated Function ... 1 minute at AC 1500 V
- Residual Resistance..... Term. 1-2: Less than 20Ω
 Term. 2-3: Less than 20Ω
- Gang Error (Dual Unit)..... 40 dB ~ 0 dB ± 3 dB
- Switch Circuit..... S.P.S.T
- Switch Contact Resistance..... Less than 50mΩ
- Switch Rated Power Single Unit: 1.0 A at AC/DC 12 V
 Single Unit with Illuminated Function: 2.0 A at AC/DC 125V

Mechanical Characteristics

- Total Rotational Angle 300° ± 5°
- Rotational Torque..... 20 gf.cm ~ 200 gf.cm
- Rotational Stopper Strength... 7.0 Kg.f.cm Min
- Push-Pull Strength..... 8 Kg.f Min
- Number of Detents Center Detent 1C, 11C, 21C, 41 C
- Switch Rotational Angle 35° ± 10°
- Switch Action 150 gf.cm ~ 500 gf.cm
- Bushing & Nut Tight Strength 8 Kg.f.cm Min
 Single Unit with Illuminated Function Strength : 7.0 Kg.f.cm Min

Durability

- Rotational Life..... 10,000 Cycles
- Rotational Life (for Joystick)..... 100,000 Cycles Min.